

e7 Atlas of Oral Manifestations of Disease

Samuel C. Durso, Janet A. Yellowitz, Jane C. Atkinson

The health status of the oral cavity is linked to cardiovascular disease, diabetes, and other systemic illnesses. Thus, there is significant clinical value in examining the oral cavity for signs of disease. This chapter presents numerous outstanding clinical photographs illustrating many of the conditions discussed in Chap. 32, Oral Manifestations of Disease. Conditions affecting the teeth, periodontal tissues, and oral mucosa are all represented.



FIGURE e7-1 Gingival overgrowth secondary to calcium channel blocker use.



FIGURE e7-2 Oral lichen planus.



FIGURE e7-3 Erosive lichen planus.



FIGURE e7-4 Stevens-Johnson syndrome—reaction to nevirapine.

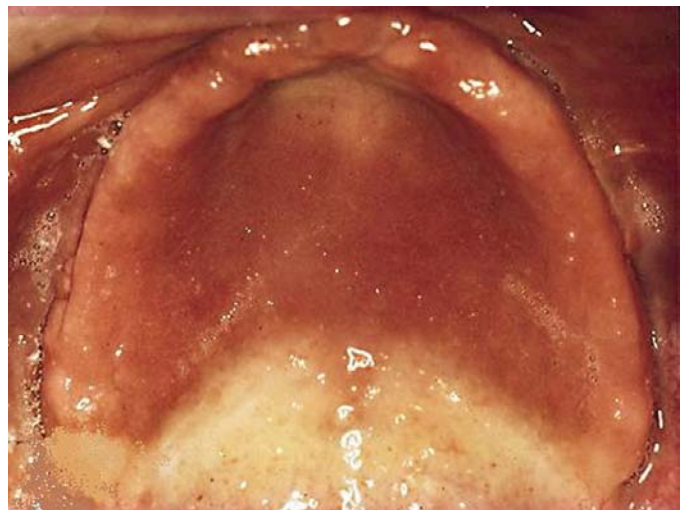


FIGURE e7-5 Inflamed palate.



FIGURE e7-6 Severe periodontitis.



FIGURE e7-7 Angular cheilitis.

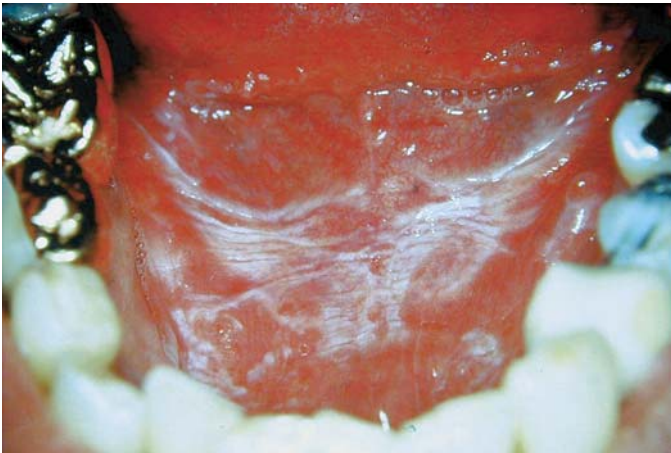


FIGURE e7-8 Sublingual leukoplakia.



FIGURE e7-9 **A.** Epulis (gingival hypertrophy) under denture. **B.** Epulis fissuratum.



FIGURE e7-10 Traumatic lesion inside of cheek.



FIGURE e7-12 Oral carcinoma.

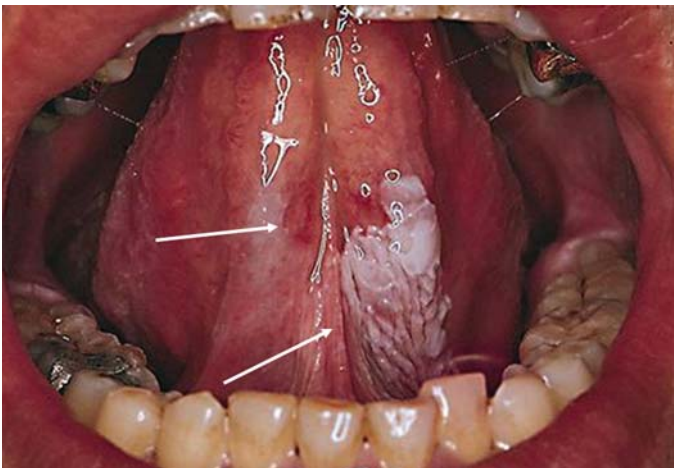


FIGURE e7-11 Sublingual keratosis.



FIGURE e7-13 Healthy mouth.



FIGURE e7-14 Geographic tongue.



FIGURE e7-15 Moderate gingivitis.

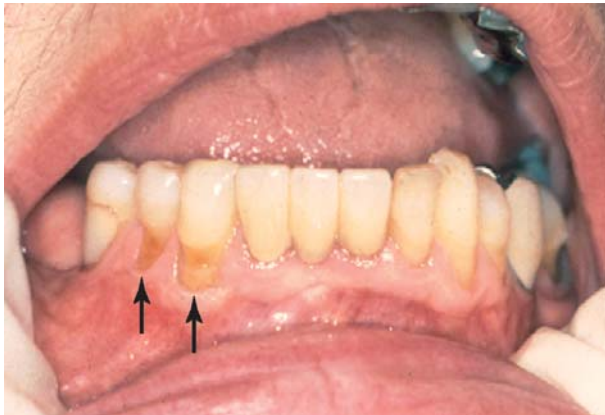


FIGURE e7-16 Gingival recession.



FIGURE e7-17 Heavy calculus and gingival inflammation.



FIGURE e7-18 Severe gingival inflammation and heavy calculus.



FIGURE e7-19 Heavy plaque and gingival inflammation.



FIGURE e7-20 Ulcer on lateral border of tongue—potential carcinoma.



FIGURE e7-23 Salivary stone.



FIGURE e7-21 Osteonecrosis.



FIGURE e7-24 **A.** Calculus. **B.** Teeth cleaned.



FIGURE e7-22 Severe periodontal disease, missing tooth, very mobile teeth.



FIGURE e7-25 Traumatic ulcer.



FIGURE e7-26 Fissured tongue.



FIGURE e7-27 White coated tongue—likely candidiasis.